

INTERESTING MUSCULOSKELETAL CASES

Mary R Wyers, M.D.

 Ann & Robert H. Lurie
Children's Hospital of Chicago™



Case 1: 13 year old with lump along her finger



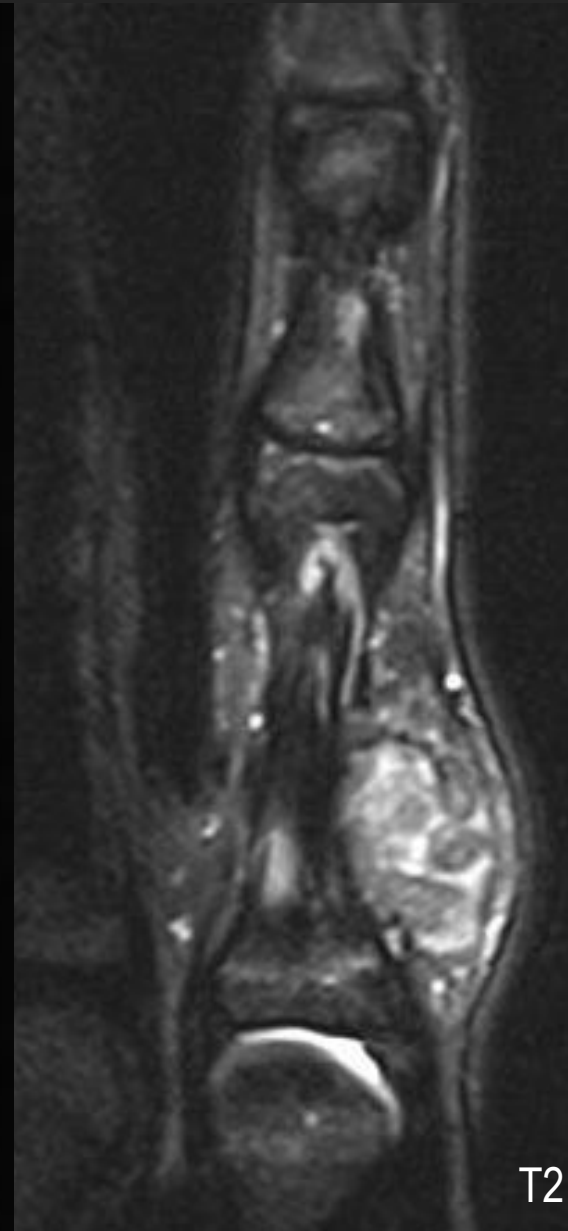
T1



Post GD

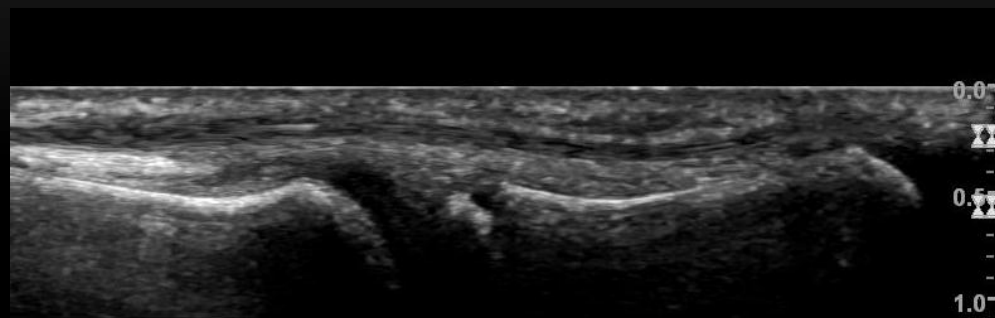


T1

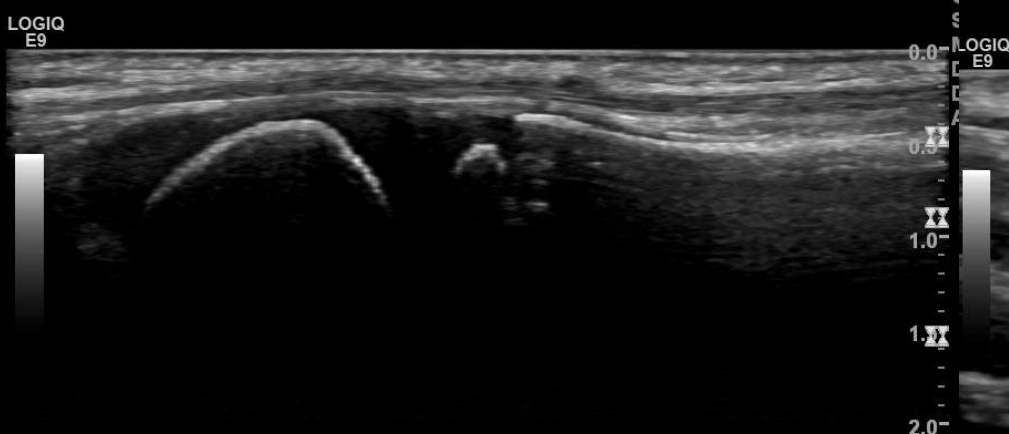


T2

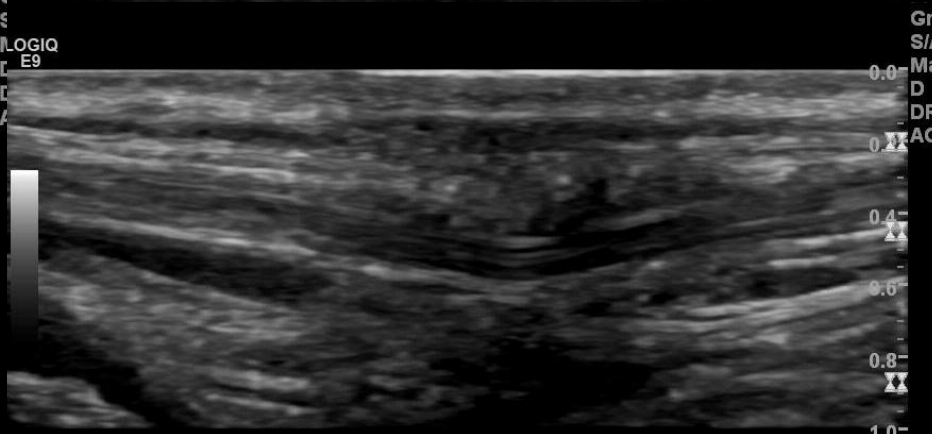
Case 2: 7 year old soccer player presented with a foot drop (specifically, great toe drop).



RT GREAT TOE LONG EHL



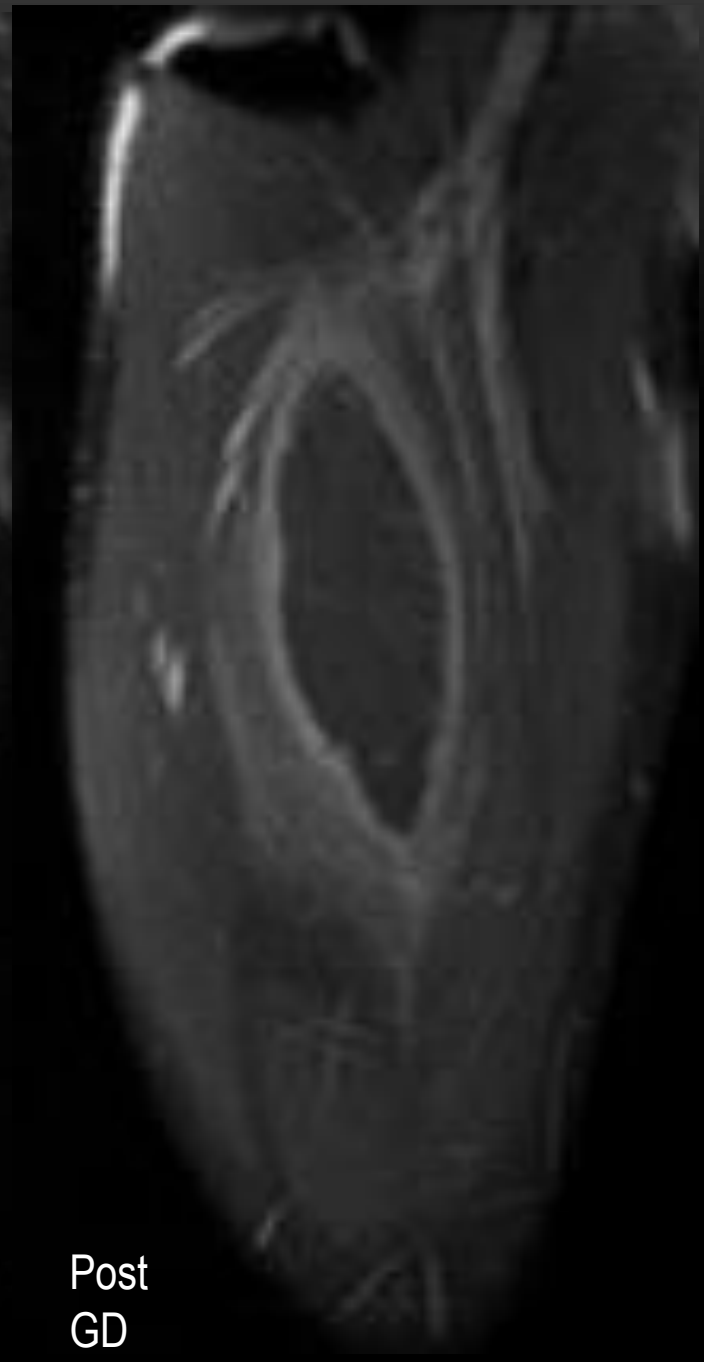
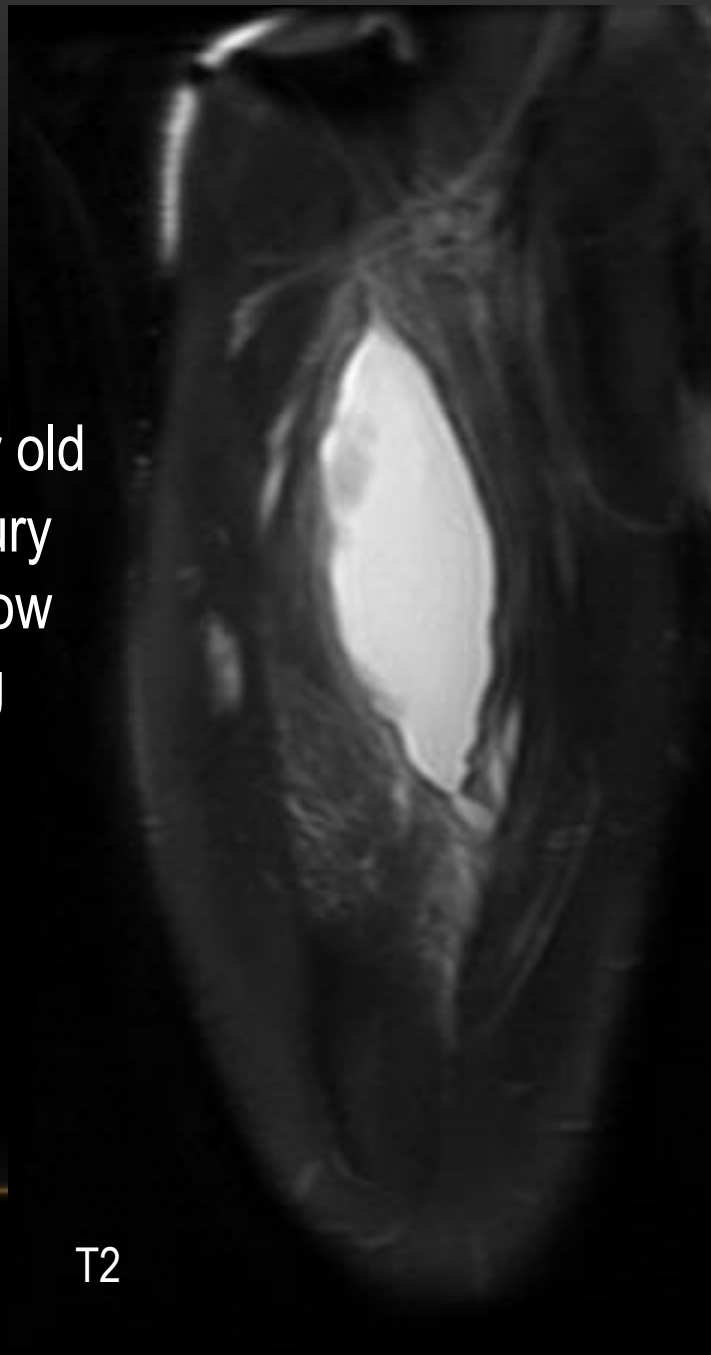
RIGHT FIRST TMT



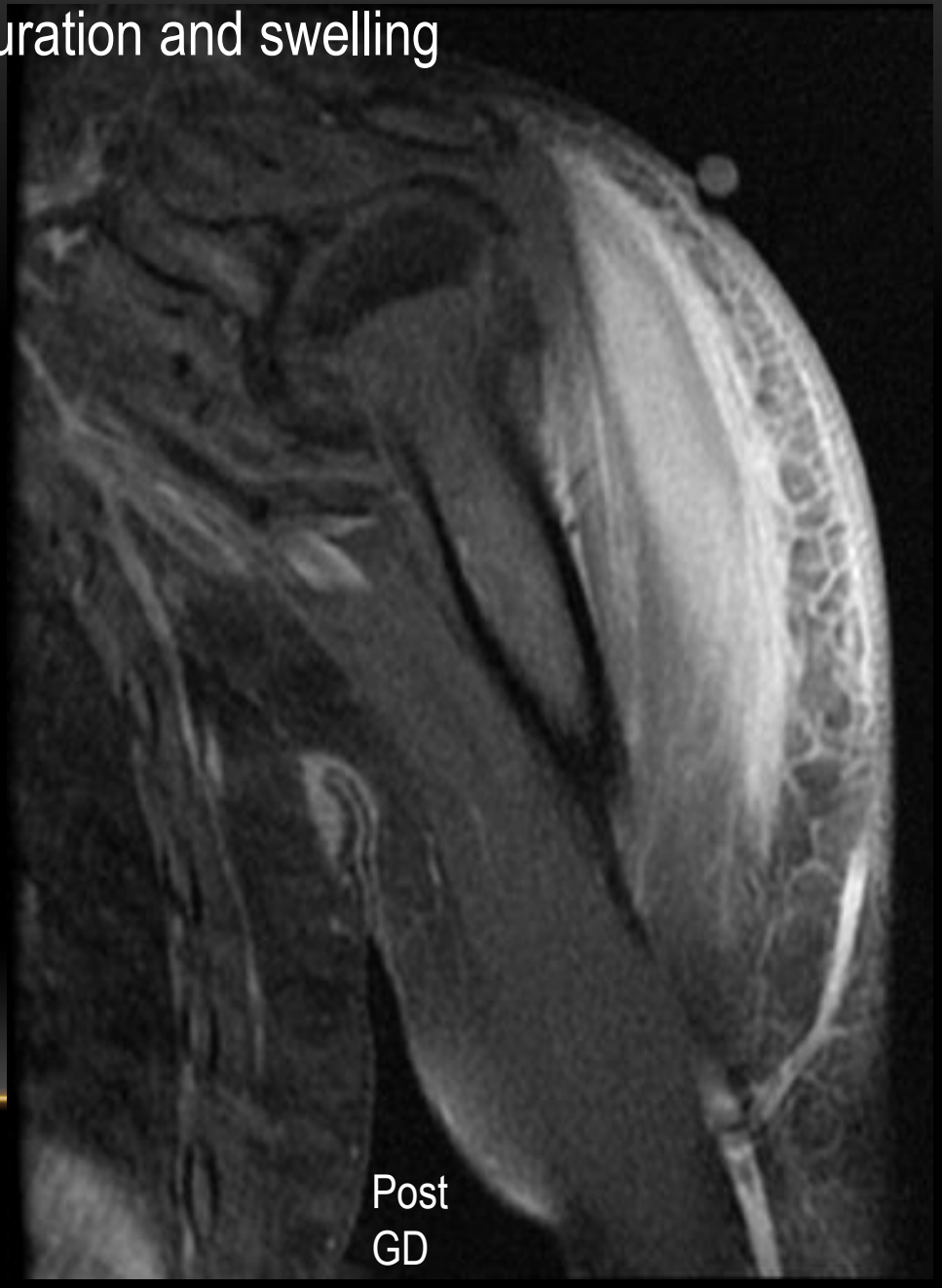
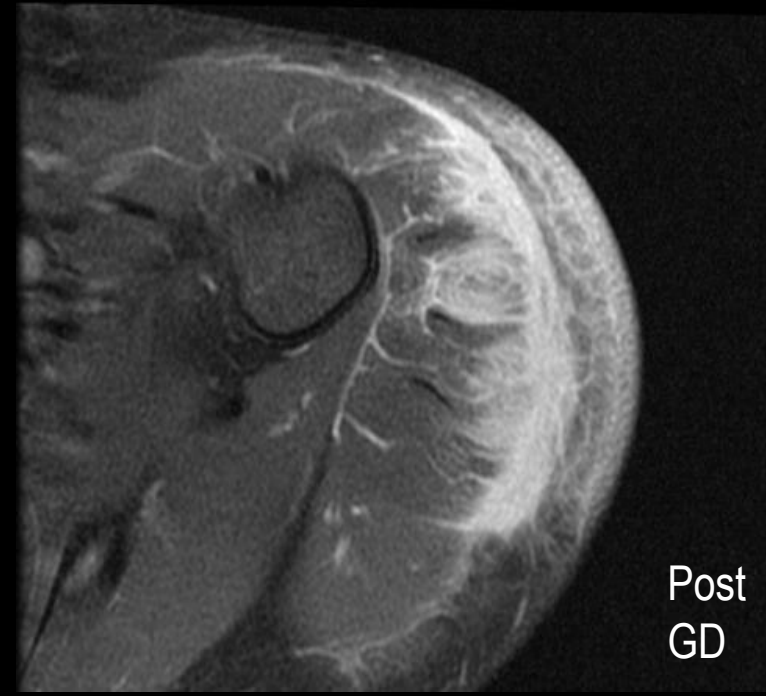
EHL LONG

RIGHT ANKLE LONG

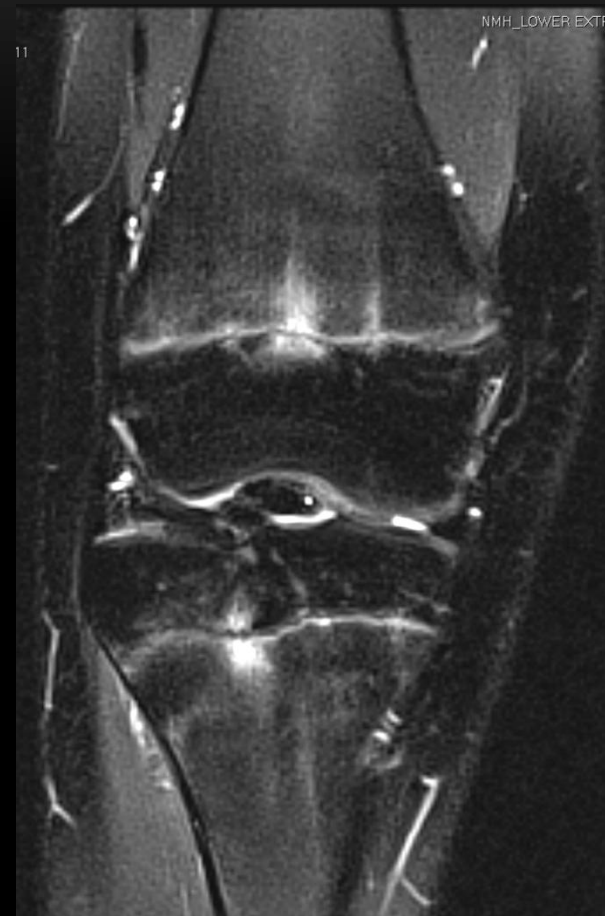
Case 3: 15 year old
boy, s/p football injury
(helmet to thigh), now
with pain & swelling



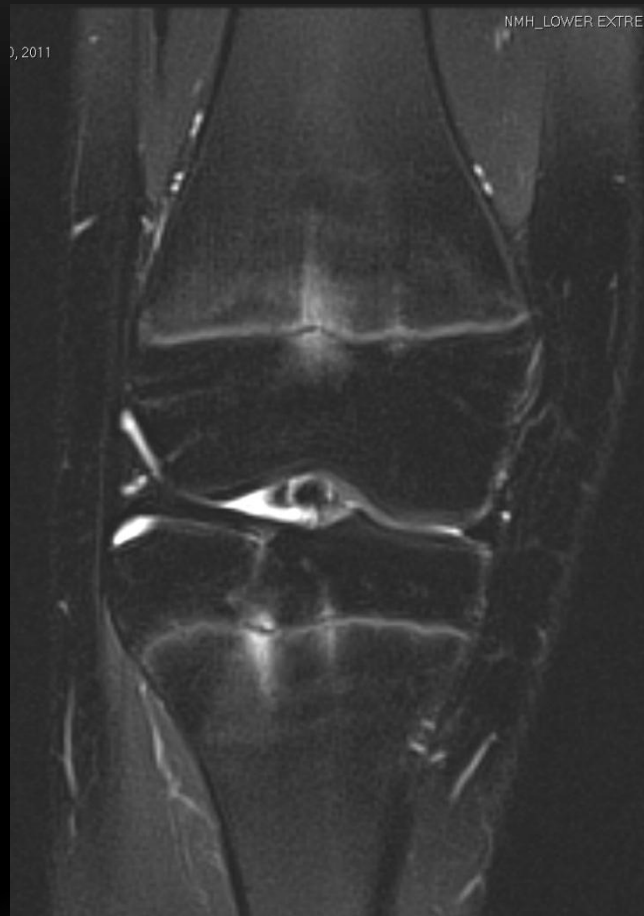
Case 4: 15 year old with shoulder induration and swelling



Case 5: 14 year old with knee pain. No history of trauma



T2 fat sat



T2 fat sat



T1



Case 6: Newborn infant with foot/leg anomaly

MI: 1.2



IR

MI: 0.4



IR

Rt



TIB: 1.0

IR

≈ 14mm 42°

TRANS RT THIGH _

Case 7: 21 month old with right thigh mass

